



HAWAIIAN  
COUNCIL

20  
25 **NATIVE  
HAWAIIAN  
CONVENTION**

PRESENTED BY

*Lilly*

A MEDICINE COMPANY

OCTOBER 6 - 9, 2025  
TULALIP RESORT CASINO

# MAHALO TO OUR SPONSORS



OFFICIAL AIRLINE PARTNER



TOURISM & ENVIRONMENTAL  
STEWARDSHIP TRACK SPONSOR



REGISTRATION PARTNER



CONCERT SPONSOR



LUNCH SPONSOR



SHIPPING SUPPORTER



# 2025 NATIVE HAWAIIAN CONVENTION

Aloha kākou,

With deep aloha for our lāhui, I extend a heartfelt welcome to each of you as we gather for this year's Native Hawaiian Convention in Tulalip, Washington. This historic convening marks a new chapter—our first convention held beyond the shores of Hawai'i on Native-owned land—as we carry the spirit of our ancestors and the voices of our people across the Pacific.

We are profoundly grateful to the Tulalip peoples for welcoming us so graciously to their beautiful lands. Their generosity, aloha, and spirit of partnership have made it possible for our lāhui to come together here. We honor their stewardship of this place and the deep cultural ties they maintain to their homelands, which resonate so strongly with our own values as kānaka 'ōiwi.

We arrive here united in purpose, bringing with us the mana of our kūpuna and the aspirations of our keiki. As we come together in this special place, we celebrate the incredible achievements of our lāhui while confronting the challenges that still lie ahead. From advancing self-determination and cultural preservation to strengthening our communities and expanding economic opportunity, our collective work continues.

Let this gathering be a time to learn, to share, and to dream boldly for the future of our people. Engage fully in the discussions, panels, and cultural moments that await you. Build new relationships, rekindle old ones, and carry forward the 'ike you gain here to uplift your communities back home.

Your presence here is a testament to your commitment to our lāhui. Together, let us chart a course forward—grounded in our culture, guided by our values, and united in our vision for a thriving Hawaiian nation.

No ka lāhui,



Kūhiō Lewis  
Chief Executive Officer, Hawaiian Council



## Kūhiō Lewis

---

Chief Executive Officer  
Hawaiian Council

---

### 2025 HAWAIIAN COUNCIL BOARD MEMBERS

Michelle Ka'uhane  
President

Makalika Naholowa'a  
Vice-President

Kevin Chang  
Treasurer

Jacob Aki  
Secretary

Rob Van Tassel  
Director

Amy Kalili  
Director

Ku'ulani Keohokalole  
Director

Vernon Wong  
Director

Alapaki Nahale-a  
Director



Aloha mai kākou,

On behalf of the Tulalip Tribes, it is my great honor to welcome the Native Hawaiian community to our lands for your 2025 Native Hawaiian Convention. We receive you with open hearts and deep respect, recognizing the cultural and spiritual significance of two Native peoples gathering together in this way.

Our peoples are connected across oceans by the enduring strength of our ancestors, the wisdom of our elders, and the hopes we carry for future generations. Though our homelands are far apart, we share a common bond rooted in sovereignty, self-determination, and the sacred responsibility to care for our lands, waters, and peoples.

This convention is not only a historic moment—the largest convening of the Native Hawaiian community on Native-owned land beyond Hawai‘i—it is also a powerful opportunity for cultural exchange. As you bring the mana of your kūpuna to this place, we offer the spirit of our Coast Salish ancestors, inviting you to walk with us in unity of mind, body, and spirit.

May this gathering be a time of learning, reflection, and celebration. May it strengthen the ties between our nations, inspire shared purpose, and uplift all of our communities. In welcoming you, we affirm our shared journey as Indigenous peoples: to protect our culture, preserve our sovereignty, and build a future of strength and resilience for our children and grandchildren.

We are humbled and honored to host you on Tulalip lands. May the days ahead be filled with connection, understanding, and the joy of being together as relatives.

With respect and friendship,

**Teri Gobin**

Chairwoman, Tulalip Tribes



**Teri Gobin**

---

Chairwoman  
**Tulalip Tribes**

---

**THE TULALIP  
TRIBES BOARD  
OF DIRECTORS**

Teri Gobin  
Chair

Hazen Shopbell  
Vice Chair

Theresa Sheldon  
Secretary

Glen Gobin  
Treasurer

Marlin Fryberg Jr.  
Council Member

Ryan Miller  
Council Member

Deborah Parker  
Council Member



# 20 25 NATIVE HAWAIIAN CONVENTION

PRESENTED BY



## TABLE OF CONTENTS

6	<i>Resort + Reservation Maps</i>
8	<i>Pre-Convention Workshop Day Schedule</i>
11	<i>Day 1 Schedule</i>
17	<i>Day 2 Schedule</i>
22	<i>Convention Concert</i>
23	<i>Day 3 Schedule</i>
30	<i>Dining Options</i>

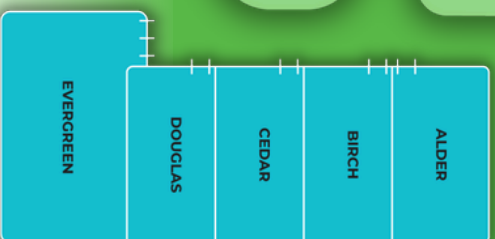


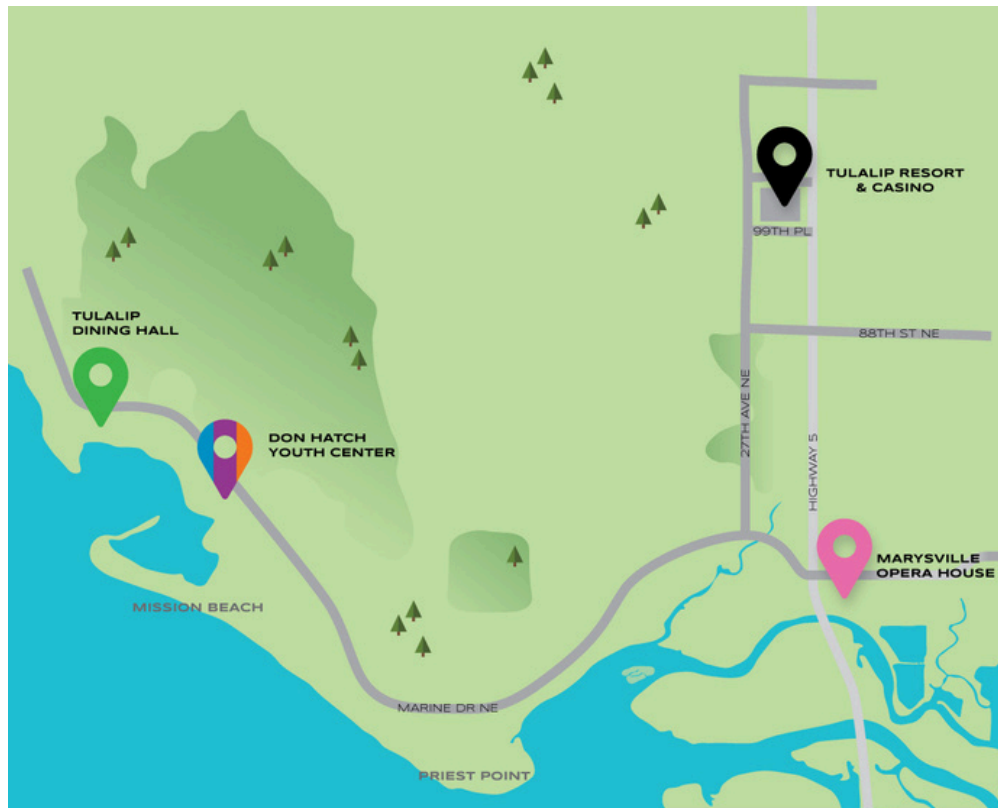
**VIEW THE AGENDA ONLINE**  
[hawaiiancouncil.org/2025-convention-agenda/](http://hawaiiancouncil.org/2025-convention-agenda/)

## MAIN FLOOR



## SECOND FLOOR





## BREAKOUT LOCATIONS

Breakout locations correspond with daily breakout session schedules.  
Please see page 12 for Day One and page 18 for Day Two.



### **TULALIP RESORT & CASINO**

#### **Plenary & General**

10200 Quil Ceda Blvd, Tulalip, WA 98271



### **MARYSVILLE OPERA HOUSE**

#### **Culture & Arts**

1225 3rd St, Marysville, WA 98270



### **DON HATCH YOUTH CENTER**

#### **Education & Economic Development, Self-Determination & Policy, 'Ōpio**

6700 Totem Beach Rd, Tulalip, WA 98271



### **TULALIP DINING HALL**

#### **Tourism & Environmental Stewardship**

4033 76th Pl NW, Tulalip, WA 98271

MONDAY, OCTOBER 6

**PRE-CONVENTION  
WORKSHOP DAY**

20  
25 **NATIVE  
HAWAIIAN**  
CONVENTION

*Enjoy cultural workshops featuring cultural practitioners in a plethora of hana no’eau and other engaging opportunities.*

**Registration**  
**7:30AM – 5:00PM**

Check in to get your name tag and event information for all three days of the Native Hawaiian Convention.

**Shop the Mākeke &  
General Store**  
**8:00AM – 6:00PM**

Shop Hawai’i-based curated products that represent the unique culture, spirit, and artistry of its people.

---

**WORKSHOPS SESSION 1 (10-11:45AM)**

---

**Mele Ha’akei Nā  
Mauna O  
Hawai’inuiākea**

*Location: Chinook 1/2*

**Kumu Hinaleimoana Wong-Kalu**

A mele can be a pathway to home. Learn a chant that honors the nine waters that surround Hawai’i, reminding all that Moananuiākea connects us as a people across the world.

**Connect to 100  
Generations of  
Ancestors**

SPONSORED BY  
FIRST HAWAIIAN BANK

*Location: Evergreen*

**Lilikalā Kame’eleihiwa**

Honor your mo’okū’ahau, add to your mo’olelo, and prepare for your mo’opuna by verifying your genealogy. Join this Mo’opono Workshop, hosted by Prof. Lilikalā Kame’eleihiwa and her team of graduate students and volunteers, and get help filling out genealogy forms and using their website to qualify for Hawaiian Home Lands or Kamehameha Schools.

**Lei Making**

*Location: Cedar/Birch*

**Bill Char**

Lei represents the ultimate expression of aloha, honoring ‘āina while encircling the bonds of our people. Practice your lei-making skills with the master, Bill Char, and leave with a lei kupe’e!

**Pre-registration required.**

MONDAY, OCTOBER 6

## PRE-CONVENTION WORKSHOP DAY

20  
25 **NATIVE  
HAWAIIAN**  
CONVENTION

---

### WORKSHOPS SESSION 2 (1-2:45PM)

---

#### **Hula 'Auana for All Ages**

*Location: Chinook 1/2*

#### ***Kumu Vicky Holt-Takamine***

"Mele O Kaho'olawe" was composed by Harry Kunihi Mitchell when Uncle Harry and members of the Protect Kaho'olawe 'Ohana took on the kuleana to stop military bombing. Learn the hula to this mele aloha 'āina.

#### **'Ōiwi E**

*Location: Evergreen*

#### ***Kumu Mehanaokalā Hind***

'Ōiwi Ē is a kāhea to stand together as one lāhui. Join Kumu Mehanaokalā Hind to learn and connect through the powerful anthem in preparation for opening ceremony. Whether you're a seasoned chanter or just love to sing, lend your voice to honor our kūpuna, stand in solidarity, and show the world that no matter where we are, Hawaiians are still here!

#### **Reconnection Through Kapa**

*Location: Cedar/Birch*

#### ***Malia Peoples***

Art can be a pathway to empowerment and healing, helping people reconnect with heritage, regain confidence, and build strength. Through kapa making, artist Malia Peoples explores cultural resilience, the revival of Native Hawaiian traditions, and her experience living in the Hawaiian diaspora. Malia will talk about her journey with kapa and guide participants in creating their own kapa-inspired stamped artwork to take home.



MONDAY, OCTOBER 6

## PRE-CONVENTION WORKSHOP DAY

20  
25 **NATIVE  
HAWAIIAN**  
CONVENTION

---

### WORKSHOPS SESSION 3 (3-4:45PM)

---

#### **Hula 'Aiha'a: Establishing Lāhui in Diaspora**

*Location: Chinook 1/2*

#### ***Pālama Foundation***

Through chant, movement, and storytelling, we follow Pele's journey of establishing home in Hawai'i as a reflection of Hawaiians in diaspora, creating and sustaining lāhui wherever they are. Open to all levels, this workshop offers hula, oli, and cultural reflection in a welcoming and inclusive space.

#### **Unlocking Mo'okū'auhau**

*Location: Evergreen*

#### ***Hailama Farden, Kale Hannahs, Luci Meyer***

Mo'okū'auhau (genealogy) shapes our identity as kānaka maoli and serves as the aho (cord) that connects us to our kūpuna, our 'āina, and our kuleana. This workshop will highlight the importance of genealogy, family and place names, and discuss best practices and protocols for conducting genealogical research.

#### **'Ulana Lauhala**

*Location: Cedar/Birch*

#### ***Keanahala***

Working with hala weaves a deeper value system of 'āina, kūpuna, kumu, a me ka lāhui. Join Keanahala to perpetuate the Native Hawaiian practice of 'ulana lauhala as an everyday affirmation of cultural resiliency and presence.

---

### EVENING ACTIVITY (6-9PM)

---

#### **E Ulu Koa, E Ola ke Ea: Activating Ea and Defending Ke Ali'i Pauahi**

*Location: Chinook 1/2*

#### ***Ke Kula 'o Kamehameha***

Join for light pūpū and an interactive session featuring:

- Ea-activation: Games, mele, and online resources that build our cultural and 'ōlelo skills and knowledge
- Collective action: Concrete ways for us to join together and uphold Ke Ali'i Pauahi's charge.
- Iron-on bar: Turn your shirt or hoodie into a canvas for lāhui messages.

***Please bring a dark colored cotton item for our staff to help iron designs onto.***

*Our convention begins with discussions of cultural traditions, self-determination, and connections to our Native cousins worldwide. Arrive early for an unforgettable opening ceremony, featuring footage from across the pae ‘āina, the continent, and the world.*

**OPENING CEREMONY (9AM-12:00PM)**  
ORCA BALLROOM

<b>Pre-Show</b>	<b><i>Nā Lei Aloha</i></b>
<b>Opening Ceremony</b>	<b><i>Hawaiian Council, the Tulalip Tribes, and a special presentation from Kānaka across the continent</i></b>
<b>Opening Remarks</b>	<b><i>Chairwoman Teri Gobin</i></b> Tulalip Tribes Board of Directors
<b>Welina</b>	<b><i>Kūhiō Lewis</i></b> Hawaiian Council, Chief Executive Officer
<b>Keynote Speaker</b>	<b><i>Sue Van</i></b> Wallace H. Coulter Foundation, President & CEO
<b>Kilohana Award</b>	<b><i>Special Presentation</i></b>
<b>Emcee</b>	<b><i>Kaloku Holt</i></b>
<b>Data Report</b>	<b><i>Rebecca Soon</i></b> Ward Research, President
<b>Panel Discussion: 21st Century Hawaiian</b>	<b><i>Moses Goods, Marques Hanalei Marzan, Dre Kalili, Māliia Ka‘aihue, Alapaki Nahale-a</i></b> How do we continue to evolve our culture while staying rooted in ‘ike kūpuna?
<b>Remarks</b>	<b><i>Melissa Dragic Swoope</i></b> Lilly, Senior Director of Patient Engagement
<b>Talk Story: Chief of War</b>	<b><i>Mehanaokalā Hind, Thomas Pa‘a Sibbett</i></b> Chief of War showed us the power of our history, our voices, and our perspective on screen. Enjoy a discussion from producer, Pa‘a Sibbett
<b>Breakout &amp; Lunch</b>	<b><i>Kaloku Holt</i></b>

**Registration**  
**7:30AM – 5:00PM**

Check in to get your name tag and event information for all three days of the Native Hawaiian Convention.

**Shop the Mākeke & General Store**  
**8:00AM – 6:00PM**

Shop Hawai'i-based curated products that represent the unique culture, spirit, and artistry of its people.

---

**BREAKOUT SESSIONS 1 (1:30-3PM)**

---

**Missing and Murdered Native Hawaiian Women, Girls, Māhū**

*Location: Chinook 1/2*

**Nikki Cristobal, Frances Tapiz-Andrian, Makanalani Gomes, 'Ilima-Lei MacFarlane, Abigail Echo-Hawk, Tami Truett Jerue, Rick Haskins-Garcia**

Join this panel of Native Hawaiian survivors of gender-based violence, movement leaders, community organizers, and researchers as they explore the causes and solutions to the Missing and Murdered Native Hawaiian Women, Girls, and Māhū crisis.

**Hawaiian Political Education and Youth Brigades**

SPONSORED BY  
PURPLE MA'Ā

*Location: Canoes Cabaret*

**Hui Aloha 'Āina o Honolulu**

Learn about theories of change through this popular education program in Hawaiian history, culture, and politics. Hui Aloha 'Āina o Honolulu will demonstrate educational modules and introduce the 2026 Native Hawaiian Diaspora Youth Brigade program aimed at building future leaders through history and action.

---

**EDUCATION & ECONOMIC DEVELOPMENT**

---

**'Ōlelo Hawai'i i ka 'Āina 'Ē: Nurturing Hawaiian Language in the Diaspora**

*Location: Youth Center*

**KALO Hawaiian Civic Club**

'Ōlelo Hawai'i is a living connection to identity, culture, and lāhui. Learn foundational skills, practical resources, and strategies to support learning and daily use in the diaspora. Whether you are beginning your journey or seeking ways to strengthen your practice, this workshop offers a welcoming space to grow, connect, and reaffirm the vitality of our ancestral language.



---

## BREAKOUT SESSIONS 1 (1:30–3PM)

---

### SELF-DETERMINATION & POLICY

---

#### **What is Federal Recognition?**

*Location: Youth Center*

#### **Summer Sylva, Breann Nu‘uhiwa, Esther Kia‘āina**

While Native Hawaiians maintain inherent sovereignty as a nation and the federal government has trust duties to the lāhui, Native Hawaiians are not governed by a “federally recognized” Hawaiian government. Learn more about the current state of the law for Native Hawaiians and how other Indigenous peoples operationalize their sovereignty.

### TOURISM & ENVIRONMENTAL STEWARDSHIP

---

SPONSORED BY SOUTHWEST AIRLINES

#### **Hot Takes on Tourism**

*Location: Dining Hall*

#### **Tyler Iokepa Gomes, Aaron Salā, Kelly Knox**

With recent shakeups in the Hawai‘i tourism ecosystem, things are getting spicy. Hear two leaders in the visitor industry give their thoughts between shots of chili peppah watah and bites of hot wings.

### CULTURE & ARTS

---

#### **The Digital Lāhui**

SPONSORED BY  
BANK OF HAWAII

*Location: Opera House*

#### **Daniel Aipa, Adam Keawe Manalo-Camp, Ipo Wright, Megan Ulu-Lani Boyanton**

Social media has changed the way we communicate, learn, and create community. Join the creators behind @thekuproject, @adamkeawe, and @hawaiiandiaspora to hear how they share mo‘olelo to an online audience. Explore how Native Hawaiians are engaging lāhui and building pilina digitally.

### ‘ŌPIO

---

#### **Aloha ‘Āina Advocacy**

SPONSORED BY THE  
OFFICE OF HAWAIIAN AFFAIRS

*Location: Youth Center*

#### **Office of Hawaiian Affairs**

From the Kū‘ē Petitions to the Wilikoki Rebellion, our lāhui has a long history of action through aloha ‘āina. Students will discuss current topics, practice their advocacy skills, and create a plan for an issue affecting their community.

**SHUTTLE TO OFF-SITE LOCATIONS**  
**3–3:30PM**

**BREAKOUT SESSIONS 2 (3:30-5PM)**

**Justice for Native Hawaiians**

*Location: Chinook 1/2*

***Aubree K-aloha, Oaklynd Unea-Beamer, Dr. Jamee Mahealani Miller, Dr. Kalei Kanuha, Kirsha Durante***

The impacts of the criminal justice system extend far beyond the sentence or time served—breaking apart families, reducing employment and educational opportunities, and excluding people from political and civic participation. Join a discussion that fosters solutions for communities and build pathways of healing and resilience to disrupt cycles of institutionalization.

**Pasifika Forum**

SPONSORED BY  
THE COULTER FOUNDATION

*Location: Canoes Cabaret*

***Empowering Pacific Islander Communities***

Pacific Islander community leaders from across the continent convene to network, talk story, and build relationships with one another as we are reminded that the ocean unites us all.

**EDUCATION & ECONOMIC DEVELOPMENT**

**Defending Native Education**

SPONSORED BY  
KAMEHAMEHA SCHOOLS

*Location: Youth Center*

***Alaska Federation of Natives, Partners in Development Foundation***

Federal policies like the Native Hawaiian Education Program and Alaska Native Education Program are critical components of the federal government's trust responsibility to Native communities. Discuss how decades of funding through federal programs and collaboration with Alaska Natives advanced educational outcomes for thousands of students.

**SELF-DETERMINATION & POLICY**

**Ready to Run and Lead?**

*Location: Youth Center*

***John Miyasato, Christine Chen***

Culture has to be the core of our resistance and cultural people have to become political. In this current political climate, we must be able to transform community leadership into policy change. Learn the intricacies of campaigning and what it takes to serve your community in a political office.

---

## BREAKOUT SESSIONS 2 (3:30-5PM)

---

### TOURISM & ENVIRONMENTAL STEWARDSHIP

---

*Sponsored by Southwest Airlines*

#### **Indigenous Case Studies in Tourism**

*Location: Dining Hall*

**Dawnielle Tehama, Keolamau Tengan, Teresa  
Ryder, Kamaka Pili, Tyler Iokepa Gomes**

As the regenerative tourism model becomes more prominent, Native Hawaiians have the opportunity to change tourism for the better. Learn how other Indigenous groups have been able to integrate authentic cultural knowledge and responsible practices into the visitor experience.

### CULTURE & ARTS

---

#### **DISplace Artist Talk**

*Location: Opera House*

**Cris Romento, Brandon Naihe, Nyomi Iwalani, Malia  
Peoples, Bruce Clayton Tom, Sage Ke‘alohilani  
Quiamno**

‘Dis place’—this place—is a nod to the resilience and pride of communities in the face of displacement from their original homelands. Hear from the artists behind this recent exhibit at the Wing Luke Museum that sheds light on the often-overlooked histories and movement of people connecting Hawai‘i to the Pacific Northwest since the arrival of the first documented Native Hawaiians to the West Coast in 1787.

### ‘ŌPIO

---

#### **Still Hawaiian: Understanding Our Place in Lāhui Through Hula**

*Location: Youth Center*

**Pālama Foundation**

‘Ōpio explore hula ‘aiha‘a—a low-postured style inspired by the eruptive power of Pele—and how it connects us to our stories, kūpuna, and lāhui, wherever we are. Through movement, chant, and the story of Pele’s journey of migration, participants will reflect on remaining Hawaiian in diaspora. The workshop combines physical practice with cultural reflection, providing youth with grounding and inspiration as they discover their place within their culture and lāhui.

**SHUTTLE TO TULALIP RESORT & CASINO  
5-5:30PM**

---

## TUESDAY EVENING EVENTS (6-8PM)

---

### **Wāhine Self-Defense**

*Location: Chinook 1/2*

### ***‘Ilima-Lei MacFarlane***

The Nā Wahine Toa Foundation was created to help end the cycle of violence against Native women by empowering wahine and keiki through self-defense. Open to everyone, come learn these practical skills and techniques from former Bellator MMA World Champion and jiu-jitsu black belt ‘Ilima-Lei Macfarlane.

### **Ali‘i to Advocacy: Hawaiian Trivia Challenge**

*Location: Evergreen*

### ***Association of Hawaiian Civic Clubs***

Join us for a fun trivia night to test your knowledge and compete for prizes! Between rounds, you'll learn about the history, mission, and impact of the Hawaiian Civic Club movement and its role in uplifting and advocating for Native Hawaiians. Whether you're a trivia enthusiast or just here for the fun, this engaging session promises laughter, learning, and lively discussion.

### **Eh, You play Kōnane?**

*Location: Cedar/Birch*

### ***John Kaohelauii***

Reconnect with this ancient Hawaiian strategy game, which was used as a teaching tool to instruct our greatest leaders in Hawaiian history on resource management. Many lessons from this game can still be applied today. **Pre-registration required.**

### **Kanikapila**

*Location: Canoes Cabaret*

### ***Office of Hawaiian Affairs***

Stop by and pau hana with some music, drinks, and good times!

**TUESDAY PAU! SEE YOU TOMORROW**



*Native Hawaiian Convention continues with a full day of hot topics like gaming, reclaiming ‘āina, ‘ōpio advocacy, and more. Stick around for a concert featuring some of Hawai‘i’s top artists like Kapena, High Watah, and Common Kings.*

**PLENARY SESSION (9AM-12:00PM)**  
ORCA BALLROOM

Pre-Show	<b>Nā Lei Aloha</b>
Welina	<b>Leialoha Ka‘ula</b>
Keynote Speaker	<b>Kaiali‘i Kahele</b> Office of Hawaiian Affairs Chair, Hawai‘i Island Trustee
Kilohana Award	<i>Special Presentation</i>
Keynote Speaker	<b>Governor John D. Waihe‘e III</b> Former Governor of Hawai‘i
Panel Discussion: The Journey Home	<b>Makalika Naholowa‘a, Pele Kaio, Keoni DeFranco, Naka Nathaniel</b> As the Native Hawaiian population grows on the continent, hear the stories of the Kānaka who returned to make Hawai‘i their home. Every journey is different, every experience is a demonstration of how to connect with culture wherever you reside.
Remarks	<b>Michelle Ka‘uhane (Hawaiian Council Chairwoman)</b> Hawai‘i Community Foundation, Chief Operating Officer and Executive Vice President
Remarks	<b>Diana Birkett Rakow</b> Hawaiian Airlines, Senior Vice President of Public Affairs and Sustainability
The Epic Tale of Hi‘iaka	Enjoy the world premiere preview of <i>The Epic Tale of Hi‘iaka</i> . This special preview showcases a fusion of Native Hawaiian storytelling, language, and hula with the artistry of a renowned team whose work has graced the stages of New York and theaters worldwide.
Breakout & Lunch	<b>Leialoha Ka‘ula</b>

WEDNESDAY, OCTOBER 8

# DAY 2

UPLIFTING THE PRESENT

20  
25 NATIVE  
HAWAIIAN  
CONVENTION

**Registration**

**7:30AM – 5:00PM**

Check in to get your name tag and event information for all three days of the Native Hawaiian Convention.

**Shop the Mākeke & General Store**

**8:00AM – 6:00PM**

Shop Hawai'i-based curated products that represent the unique culture, spirit, and artistry of its people.

---

## BREAKOUT SESSIONS 1 (1:30-3PM)

---

**Indigenous Control of Housing Futures**

SPONSORED BY THE  
OFFICE OF HAWAIIAN AFFAIRS

*Location: Chinook 1*

**Office of Hawaiian Affairs**

Join OHA and partners to explore community land trusts, 'āina stewardship, and Indigenous-led housing solutions that move our people from displacement to thriving.

**From Ceded to Seeded: Native Hawaiian Rights in the Public Land Trust**

SPONSORED BY THE  
OFFICE OF HAWAIIAN AFFAIRS

*Location: Chinook 2*

**Hulu Lindsey, Dr. Jon Osorio**

Explore Hawai'i's Crown and Government Lands, past to present. Advocates, cultural practitioners, and policymakers discuss challenges, opportunities, and the Public Land Trust's impact on OHA, its resources, and governance.

**Rediscovering Hawai'i's Soul: Reimagining Our Connection to Hawai'i and Shared Future**

*Location: Canoes Cabaret*

**Hawai'i Executive Collaborative**

In the face of deepening divisions and challenges, come talk about healing, transformation, and collective kuleana rooted in 'Ōiwi values inclusive of all who call Hawai'i home. Explore how each of us can help protect and live Hawai'i's Soul for future generations through trust, reciprocity, and connection to people and place.

---

## EDUCATION & ECONOMIC DEVELOPMENT

---

**Non-Profit Fundraising, Philanthropy, and Capacity-Building**

SPONSORED BY THE HAWAII  
COMMUNITY FOUNDATION

*Location: Youth Center*

**Sophy Yem, La'akea Stone, Susie Sands, Kehau Meyer**

Hear directly from philanthropic and government funders about how to successfully grow and leverage your non-profit funds. Learn how different organizations have been able to convene, advocate, educate, and innovate to dramatically increase investments in Native Hawaiian communities.

WEDNESDAY, OCTOBER 8

# DAY 2

UPLIFTING THE PRESENT

20  
25 **NATIVE  
HAWAIIAN**  
CONVENTION

## BREAKOUT SESSIONS 1 (1:30-3PM)

### SELF-DETERMINATION & POLICY

#### Economic Sovereignty

*Location: Youth Center*

#### ***Ti Leaf Group***

Native peoples have faced numerous historical barriers stemming from colonialism, lack of infrastructure, limited capital, and restricted access to opportunities. Hear how economic sovereignty can be a transformative tool for Indigenous self-determination.

### TOURISM & ENVIRONMENTAL STEWARDSHIP

SPONSORED BY SOUTHWEST AIRLINES

#### Crafting an 'Āina Aloha Regenerative Economy

*Location: Dining Hall*

#### ***Kali Watson, Jason Jeremiah, En Young, Nick Koch, Neil Hannahs***

Ecologically, the koa tree is a keystone species that supports the entire forest ecosystem. Learn how harvesting this endemic acacia can restore forest abundance, create opportunities for Hawaiian-owned businesses, and produce beautiful musical instruments.

### CULTURE & ARTS

#### Kūlana & Kuleana

*Location: Opera House*

#### ***Kumu Hinaleimoana Wong-Kalu***

What is your role and responsibility as a kanaka living on the continent? Feel the mana'o directly from Kumu Hina about how thinking of kūlana versus kuleana in your daily life can uplift lāhui.

### 'ŌPIO

#### Indigenous Youth Rights

*Location: Youth Center*

#### ***B. Noelani Iokepa-Guerrero, Papahana Aloha 'Āina, Tulalip Youth***

Led by Indigenous youth from Hawai'i and Tulalip, this collaborative presentation provides an overview of the Declaration of Indigenous Youth; the youth-developed Tulalip Declaration document; and the process that began the connection to uplift their respective peoples.

**SHUTTLE TO OFF-SITE LOCATIONS**  
**3-3:30PM**

WEDNESDAY, OCTOBER 8

# DAY 2

UPLIFTING THE PRESENT

20  
25 NATIVE  
HAWAIIAN  
CONVENTION

## BREAKOUT SESSIONS 2 (3:30-5PM)

### **‘Āina Ho‘opulapula: The Next 100 Years**

*Location: Chinook 1/2*

#### **Department of Hawaiian Home Lands**

What has been achieved and what lies ahead—Department of Hawaiian Home Lands Director Kali Watson highlights the progress made in tackling the waitlist through innovative strategies, collaborative efforts, and a new approach.

### **Storytelling from the Diaspora**

*Location: Canoes Cabaret*

#### **Cris Romento, Sara Kehaulani Goo, Megan Ulu-Lani Boyanton**

Through independent films and journalism, these storytellers talk about why it's more important than ever to tell Hawaiian stories from the diaspora, the reaction to them, and the challenges of getting them made within today's media landscape. Moderated by Seattle Times journalist Megan Ulu-Lani Boyanton, hear more about the responsibility, audience, and process of Native Hawaiian storytelling in the diaspora.

## EDUCATION & ECONOMIC DEVELOPMENT

### **Gaming: Reclaiming Wealth and Restoring the Lāhui**

SPONSORED BY  
MARNELL COMPANIES

*Location: Youth Center*

#### **Brie Coyle Jones, Brandon Maka‘awa‘awa, Ryan Miller, Anthony A. Marnell III, Tyler Iokepa Gomes**

Join us to explore how gaming, led by Hawaiians for Hawaiians, can serve as a path toward reconciliation, economic sovereignty, and community-led wealth. This isn't about casinos—it's about restoring power, protecting ‘āina, and designing our own future.

## SELF-DETERMINATION & POLICY

### **Data on Diaspora**

*Location: Youth Center*

#### **Ward Research, Papa Ola Lōkahi**

How do we continue to learn from multiple viewpoints and aspects of Hawaiian culture? Explore findings from recent studies that investigate Native Hawaiians across the country. Results from these discussions highlight contemporary challenges, different perspectives, common ground, and proposed solutions.



WEDNESDAY, OCTOBER 8

# DAY 2

UPLIFTING THE PRESENT

20  
25 **NATIVE  
HAWAIIAN**  
CONVENTION

## BREAKOUT SESSIONS 2 (3:30-5PM)

### TOURISM & ENVIRONMENTAL STEWARDSHIP

SPONSORED BY SOUTHWEST AIRLINES

#### Reclaiming Our 'Āina and Communities

*Location: Dining Hall*

#### ***Lahaina Community Land Trust***

Learn how to harness the power of community through the Community Land Trust model in order to reclaim 'āina, restore our people, and protect homeownership opportunities for generations to come.

### CULTURE & ARTS

#### The Kumulipo: A Cosmogonic Genealogy of the World

*Location: Opera House*

#### ***Lilikālā Kame'eleihiwa***

The Kumulipo is a sacred Hawaiian cosmogonic genealogy that connects Kānaka 'Ōiwi back to the time of source darkness—the genesis of the universe. The Kumulipo is the bedrock of ancestral knowledge, serving as a profound expression of Hawaiian worldview and the interconnectedness of all life. Learn more about this chant, from the ancestral coral polyp to all living things to the ali'i nui of the 1700s.

### 'ŌPIO

#### Mōhala E Nā 'Ōpio: Elevating Native Hawaiian Youth Voices in the Diaspora

*Location: Youth Center*

#### ***KALO Hawaiian Civic Club***

How can Hawai'i-based organizations and allies strengthen connections and create meaningful opportunities for our youth beyond the shores of Hawai'i? Led by the 'Ōpio leaders of Ka 'Aha Lāhui O 'Olekona and the Pacific Northwest, reflect on the challenges of limited resources, support in the diaspora, and the collective effort behind House Bill 3144, the Pacific Islander Student Success Plan.

**SHUTTLE TO TULALIP RESORT & CASINO  
5-5:30PM**



WEDNESDAY, OCTOBER 8

**DAY 2**

UPLIFTING THE PRESENT

20  
25 **NATIVE  
HAWAIIAN**  
CONVENTION



# CONCERT

**ORCA BALLROOM - DOORS OPEN 6:30PM**

Experience an unforgettable night of music with the electrifying Kapena, High Watah, and Common Kings!

Tickets will be scanned at the door, where you will receive your wristband.

**VIP & VVIP** - Please use the VIP entrance for lanyards & access to exclusive bar

**CONCERT BEGINS AT 7PM**



**SCAN THE QR CODE TO BUY YOUR TICKETS!**

Our convention finishes with a networking breakfast, closing words, and a cultural exchange with the Tulalip Tribes. Mahalo for joining us!

Shop the Mākeke & General Store  
8:00AM – 12:30PM

Shop Hawai'i-based curated products that represent the unique culture, spirit, and artistry of its people.

CLOSING CEREMONY (9-10AM)

ORCA BALLROOM

Breakfast Buffet

**Nā Lei Aloha**

Arrive early for a complimentary breakfast and networking session before closing out the week.

CLOSING CEREMONY (10AM-12PM)

ORCA BALLROOM

Welina

**Mehanaokalā Hind**

Hawaiian Council, Senior Advisor to the CEO

Member Meeting and Annual Report

**Nick Carroll**

Hawaiian Council, Chief of Staff

Panel Discussion:  
Strengthening Native  
Hawaiian Voices

**Robin Danner, Derek Valdo, Chairwoman Teri Gobin**

As Indigenous Peoples, we share values and beliefs across Nations. Discover how we can continue to connect, collaborate, and work together for generations to come.

Ho'olauna

**Cultural exchange between Hawai'i and Tulalip**

Closing Remarks

**Kūhiō Lewis**

Hawaiian Council, Chief Executive Officer

Hawai'i Aloha

**Kumu Hinaleimoana Wong-Kalu**

Hawaiian Council, Cultural Ambassador



## About Lilly Trials

By pursuing the strongest scientific targets, Lilly aims to bring forward innovations that help more people achieve better health and live longer lives.

Scan the QR code to learn more



**Aloha Lāhui!**  
**Whether from Hawai‘i,**  
**the continent, or around the**  
**world—we gather in unity.**

*I ho‘okahi ka umauma,*  
*ho‘okahi ke aloha.*



[hawaiicommunityfoundation.org](http://hawaiicommunityfoundation.org)

# Support local. Shop Hawaiian. Celebrate community.



**NĀ MEA HAWAI'I HAS JOINED THE HAWAIIAN COUNCIL 'OHANA!  
VISIT OUR FLAGSHIP LOCATION AT WARD CENTER AND OUR NEW  
COLLABORATION AT BISHOP MUSEUM.**

**Bishop Museum**  
1525 Bernice Street,  
Honolulu, HI 96817  
(808)465-6578

**Ward Center**  
1200 Ala Moana Blvd, Ste 270,  
Ward Centre, Honolulu, HI 96814  
(808)596-8885

**NĀ MEA  HAWAI'I**



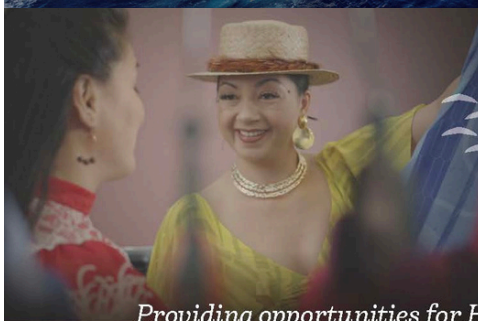
# Mahalo CNHA

*for Uplifting Lāhui,  
Across Oceans and Generations*



## Matson

Matson.com |  MatsonInc



*Providing opportunities for Hawaiians to thrive in Hawai'i*



[www.oha.org](http://www.oha.org)



*The Office of Hawaiian Affairs is a proud sponsor of the 2025 Native Hawaiian Convention*



HAWAIIAN  
COUNCIL

# **‘A‘OHE HANA NUI KE ALU ‘IA**

***No task is too big when done  
together by all.***

Join Hawaiian Council's growing  
community of organizations from  
across all of Hawai'i and beyond.



Scan or learn more at  
[hawaiiancouncil.org/membership](https://hawaiiancouncil.org/membership)



# Maika'i

We are proud to support the Hawaiian Council and their endeavors to further the cultural, economic, and social well-being of Native Hawaiians today and for future generations.



First Hawaiian Bank.

It all starts with yes.

[FHB.com](http://FHB.com)

Member FDIC



## Rooted in Culture. Driven by Community.

From the wisdom of our ancestors to the dreams of tomorrow, we paddle forward together. Bank of Hawai'i is proud to support the Hawaiian Council and their dedication to the well-being and future of Kānaka Maoli.

[boh.com](http://boh.com)    

MEMBER FDIC © 2025 Bank of Hawaii dba Bank of Hawai'i

 **Bank of Hawai'i**





**TRADEWIND**  
GROUP FOUNDATION

**Care More | Try Harder | Go Further**

Tradewind Group is a Hawai'i based company with a legacy of commitment to the islands. We believe in investing in Hawai'i's people and businesses to help our communities thrive. Through the Tradewind Group Foundation, we are honored to support the Council for Native Hawaiian Advancement and the 2025 Native Hawaiian Convention.

[www.tradewindgrp.com](http://www.tradewindgrp.com)  
[info@tradewindgrp.com](mailto:info@tradewindgrp.com)  
[@tradewindgroup](https://www.instagram.com/tradewindgroup)



**PURPLE MAI'A**

Empowering the  
next generation of  
**culturally-grounded,**  
community-serving  
technology makers  
and **problem solvers.**





# Ola Pauahi, Ola Hawai'i

## Living and protecting the charge of Princess Bernice Pauahi Bishop

Na kaua e pale, me ka ihe — In battle we will defend, with weapons of sharp intellect

In this moment of challenge to our admissions policy, we stand ready to defend what is dear to our people, our lands and our keiki, and our ability to steward and raise them for a thriving lāhui and pae 'āina. We will rise up as pū'ali koa, battalions of koa ready to defend Kamehameha and Ke Ali'i Pauahi.

E kūlike kākou! Stand with us!



Ke Kula 'o Kamehameha

## DINING OPTIONS

### AT RESORT

Cedars Cafe | Su-Th: 7AM-11PM

Killer Coffee (Hotel Location) | 6AM-2PM

Killer Coffee (Casino Location) | Open 24 Hours

Blackfish Wild Salmon Grill & Bar | M-Th: 5-9PM, F-S: 5-11PM

Blazing Paddles | Su-Th: 11AM-11PM

Canoes Carvery | M-Th: 7AM-7PM

The Draft Sports Bar & Grill | Su-Th: 6-10AM

Journeys East | Su-Th: 12-10PM

Salish Sun Taqueria, Bar & Burgers | Open Daily: 11-12AM (21+)

Tula Bene Pastaria + Chophouse | W-Th: 5-9PM, F-S: 5-11PM, Su: 5-9PM

### FOOD TRUCKS AT RESORT

Ryan's REZ-ipes | scapa BBQ

### OFF-SITE

Bliss Tea | Cafe Bento | Indian Food Truck | Kung Pao Wok | Lasa Street Food

McDonalds | Poke Pekoe | Qdoba Mexican Eats | Ram Restaurant & Brewery

Starbucks Coffee | Subway | Villa Italian Kitchen | Yee-Roh







FOLLOW US ONLINE!



HAWAIIAN  
COUNCIL